



Learner Centric Advanced Manufacturing Platform



LCAMP in the regional context of the Basque Country



Co-funded by
the European Union



Learner Centric Advanced Manufacturing Platform

The LCAMP project aims to support and empower regional Advanced Manufacturing Centres of Vocational Excellence (CoVE) to become more resilient, innovative and better equipped to train, upskill, and reskill young and adult students to successfully face the digital and green transitions.



**Co-funded by
the European Union**

The European Commission's support for the production of this publication does not constitute an endorsement of the contents, which reflect the views only of the authors, and the Commission cannot be held responsible for any use which may be made of the information contained therein.

ICAMP

Learner centric Advanced Manufacturing Platform



Co-funded by the European Union

CANADA

- Camosun College
- 2 ● 6 ● 2

United Kingdom

- 1

NETHERLANDS

- ROC DaVinci College
- 2

BELGIUM

- EARLALL
- 1 ● 4

FRANCE

- CMQE
- Mecanic Vallée
- 4 ● 6 ● 3

SPAIN

- TKNIKA
- CIFP Miguel Altuna
- AFM
- 3 ● 7 ● 3

ITALY

- MADE
- AFIL
- 1

GERMANY

- DHBW
- FORCAM
- 4 ● 1

SWEDEN

- Curt Nicolin Gymnasium
- Simumatik
- 1

SLOVENIA

- TSCM
- SKUPNOST SSV

TURKEY

- GEBKİM VET
- KPDonE
- GEBKİM OIZ
- 1 ● 3 ● 3

MALTA

- Knowledge Innovation Centre

20 Full Partners

● VET providers

● Industrial Associations, VET Associations

60 associate partners

● VET/HVET Centres and VET Associations

● Companies, Associations of Companies, R&D centres

● Regional Education Bodies, European Networks



Learner centric Advanced Manufacturing Platform

LCAMP will support and empower regional AM CoVEs to become more resilient, innovative, and better equipped to train, upskill, and reskill young and adult students to

successfully face the digital and green transitions. LCAMP supports regions grow and be more competitive through their VET systems.



Co-funded by the European Union

WP2
LCAMP Alliance
Alliance of Learner centric Advanced Manufacturing CoVEs

WP7
VET-SME connection
Accelerate the delivery of trainings on advanced manufacturing for SMEs by linking digital transformation journeys with trainings delivery from Vet centres.

WP3
Observatory
Learner centric Advanced Manufacturing Observatory

WP6
Collaborative Learning Factory- CLF
Collaborative Learning Factory for Industry 4.0 technologies' absorption

WP4
Open Innovation Community
Promote applied research and development projects, mainly between CoVEs and SMEs

WP5
Learner centric training for AM
Learner centric training for Advanced Manufacturing

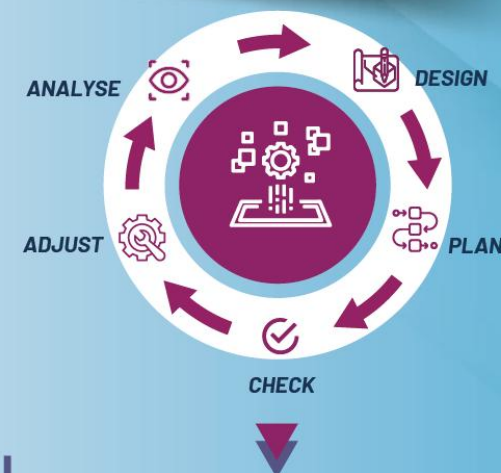
WP2 to 7
HIGH-VALUE SERVICES FOR ADVANCED MANUFACTURING COVES OFFERED THROUGH THE ONLINE PLATFORM FOR LEARNER CENTRIC ADVANCED MANUFACTURING (WP8)

WP8



PLATFORM for Learner Centric Advanced Manufacturing

THE PERMANENT EUROPEAN PLATFORM OF VOCATIONAL EXCELLENCE FOR ADVANCED MANUFACTURING WILL PROVIDE A ONE-STOP-SHOP SERVICE FOR ACCESSING ALL SERVICES, DATA AND INFORMATION GENERATED BY THE PROJECT.



WP1 Project management, quality assurance and risks management

WP10

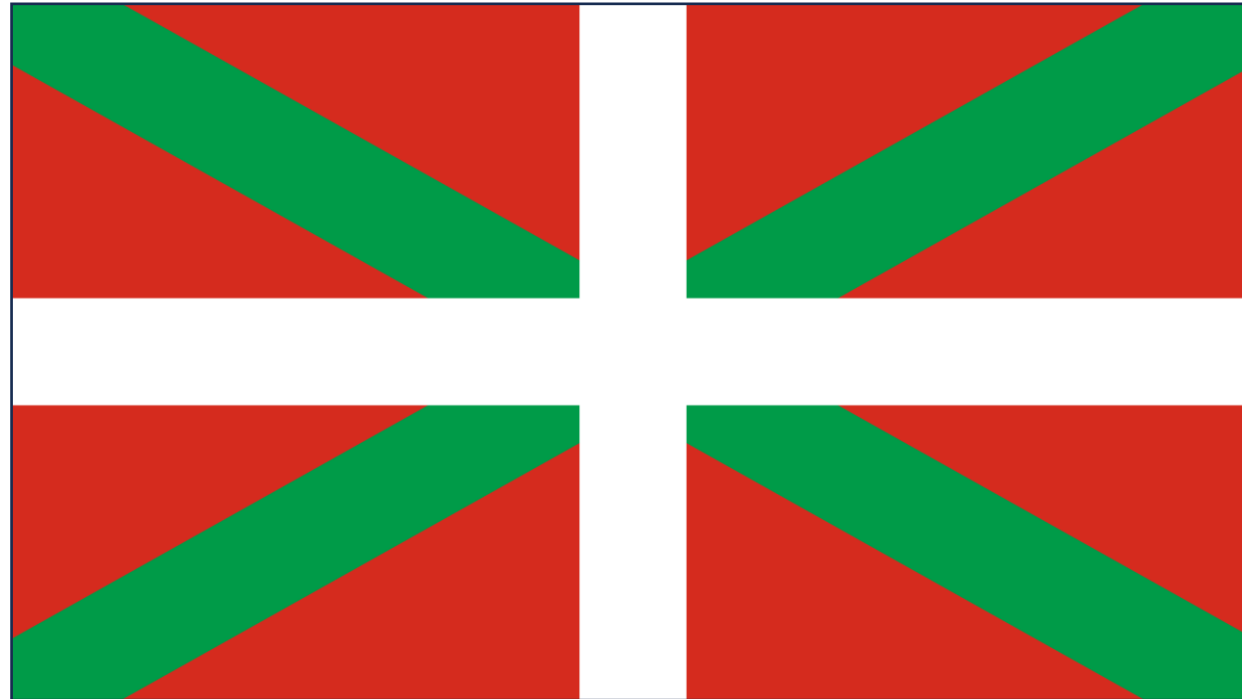
Action Plan

Which will ensure the sustainability of the project after the end of the funding

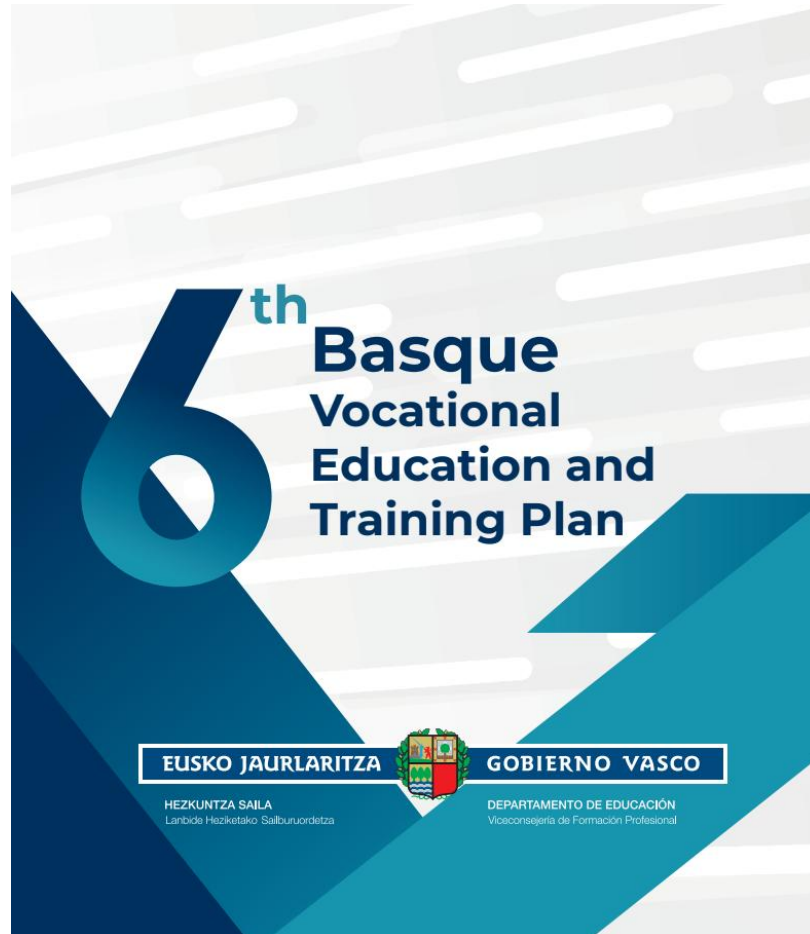
* Wp1 and Wp9 Are transversal and apply to the all wps

WP9 Dissemination and exploitation

LCAMP in the Basque Country



Impact: VI Basque VET Plan



6th Basque Vocational Education And Training Plan

Directorate-General for Employment between 2019 and 2021. Over the next four years, i.e. up to the year 2026, Tknika will head up a new platform, LCAMP, focusing on Advanced Manufacturing and Industry 5.0. This puts us at the centre of one of Europe's leading VET initiatives.

15.2. Internationalisation of Applied Innovation and Research in the Basque VET system.

- » Lead an international VET Applied Research group.
- » Draw up institutional agreements with other countries on applied research and innovation in vocational education and training.
- » Create, develop and launch the European platform for excellence in VET, in Advanced Manufacturing and Industry 5.0.
- » Work on the internationalisation of VET centres, connecting different learning spaces by means of advanced digital technologies.
- » Create an international VET Applied Research periodical.
- » Work on projects on the EU's Horizon Europe programme.
- » Work on different kinds of EU projects.
- » Train the heads of internationalisation at centres to submit or take part in international VET applied research and innovation projects.
- » Advise any VET centres in the Basque Country seeking assistance with internationalisation.



Impact: Alliance



Impact: Observatory





Impact: Innovation projects with SMEs



The image shows the cover of a report titled 'D7.1 ADMA-LCAMP FRAMEWORKS INTEGRATION'. The cover is dark blue with white and light blue text and graphics. At the top left is the LCAMP logo with the tagline 'Learner Centric Advanced Manufacturing Platform'. Below the logo is a light blue circular graphic. The main title 'D7.1 ADMA-LCAMP FRAMEWORKS INTEGRATION' is in white, bold, uppercase letters. Below the title is a horizontal line, followed by the subtitle 'WP7 SME-VET CONNECTION' in light blue. At the bottom left is the European Union flag logo with the text 'Co-funded by the European Union'. At the very bottom, in small white text, it says 'Funded by the European Union. Views and opinions expressed are however those of the author(s) only.' The cover also features abstract light blue and white geometric shapes on the right side.

LCAMP
Learner Centric Advanced Manufacturing Platform

**D7.1 ADMA-LCAMP
FRAMEWORKS INTEGRATION**

WP7 SME-VET CONNECTION

Co-funded by
the European Union

Funded by the European Union. Views and opinions
expressed are however those of the author(s) only.



Impact: Learning Factories

REPORTS



LEARNING FACTORY ASSESSMENT

Assess the readiness of your learning factory with the LCAMP Learning factory self-assessment (LF-SAT).

[Access the LF-SAT tool](#)



Learner Centric Advanced Manufacturing Platform



#LCAMP_EU
Thank you!



www.lcamp.eu



[@LCAMP_EU](https://twitter.com/LCAMP_EU)



LCAMP
Learner Centric Advanced
Manufacturing Platform for
CoVEs



**Co-funded by
the European Union**