



Co-funded by
the European Union



SMALEI - Sustainability Matrix for Adult Education Institutions

EARLALL Academy, 25 April 2024

#SMALEI



Co-funded by
the European Union



SMALEI

- March 2022 – February 2025, Erasmus+ KA2
- Development of a sustainability matrix, **self-assessment tool**, **accompanying webinars** and PDF tool (available in EN, DE, SW, ES, PL, TR)
- Project partners: EAEA, EARLALL; TKNIKA; Volkshochschulverband Baden-Württemberg e.V. – VHS BW; Glokala Folkbildningsföreningen; STOP Association; Yuva Association

WELCOME TO THE

SUSTAINABILITY MATRIX FOR ADULT LEARNING INSTITUTIONS

The project partners developed a matrix to assess the existing conditions of sustainability aspects, hands-on tools and policy recommendations in ALE organisations. It is available here and will be updated on a monthly basis.

+ How does the Sustainability Matrix for Adult Learning Institutions Work?

Explore your sustainability by clicking through the following areas:

- Environmental sustainability of the institution
- Green skills of trainers and staff
- Engagement of learners
- Awareness-raising and involvement of people
- Partnerships for sustainability



Matrix Objectives

- The project partners developed a matrix to assess the existing conditions of sustainability aspects, hands-on tools and policy recommendations in ALE organisations.
- The Matrix will be accompanied by a self-assessment tool (currently in test phase) as well as best practices and an expert repository.



 **HOW TO USE THE MATRIX?** 

1. Look at the five areas of the matrix below and click on the area that interests you the most.
 _____
2. Learn about the specific area where your organisation could improve its sustainability.
 _____
3. Click on the sub-sections to see best practices where you can learn how to improve your organisation.
 _____
4. Take the self-assessment test for each area. The quiz will allow you to see where you are advanced and where you have room for improvement. It will also link to the best practices to help you.
 _____
5. Read the guidebook to learn how to implement certain changes in your organisation.
(Coming September 2024)

 Co-funded by
the European Union



Co-funded by
the European Union



Matrix Overview



Environmental
sustainability
of the
institution



Green skills of
trainers and
staff



Engagement of
learners



Awareness-
raising and
involvement of
people

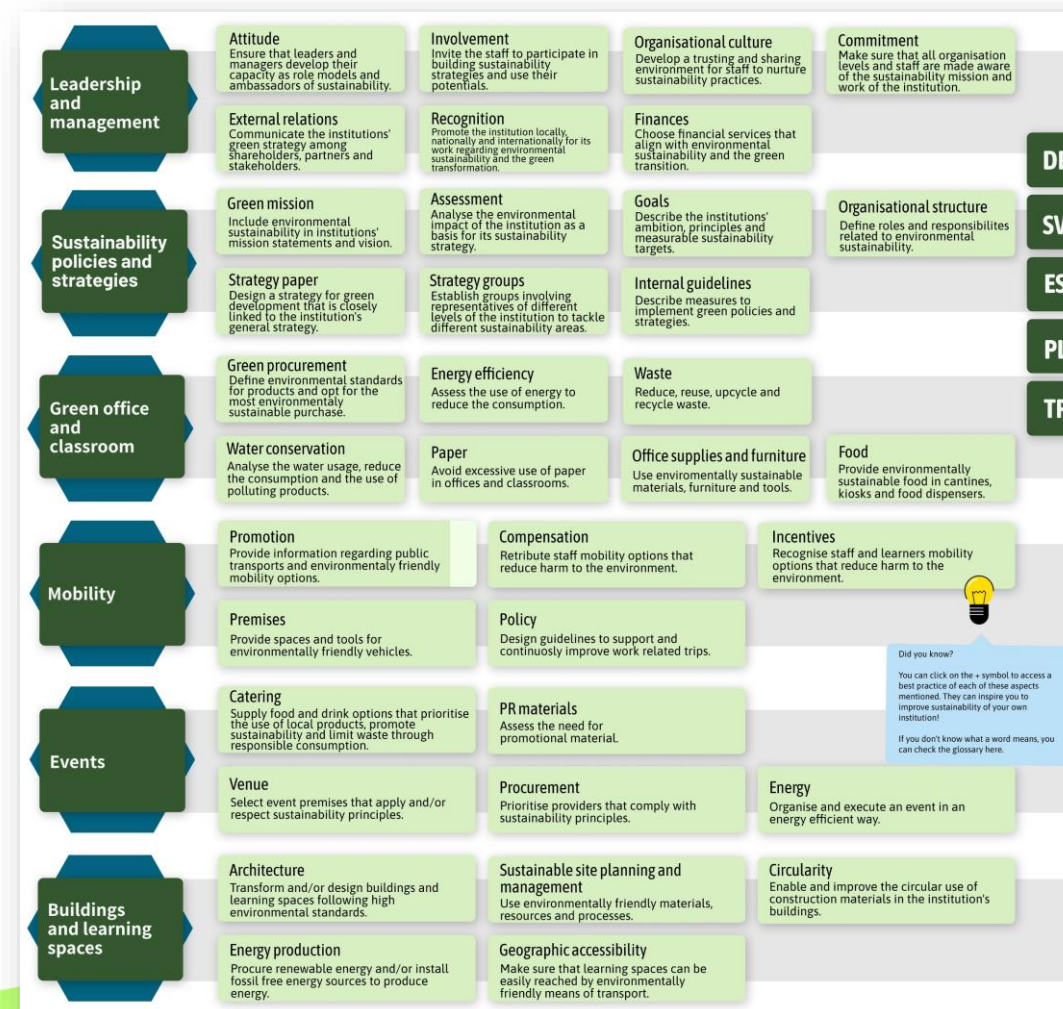


Partnerships
for
sustainability



Environmental Sustainability of the Institution

- What is the Environmental Sustainability of the institution, and why do they matter for the sustainability of ALE institutions?
- Adult education providers initiate or join partnerships to have a relevant societal impact for a green transition – reaching new target groups and opening up new possibilities and collaborations.



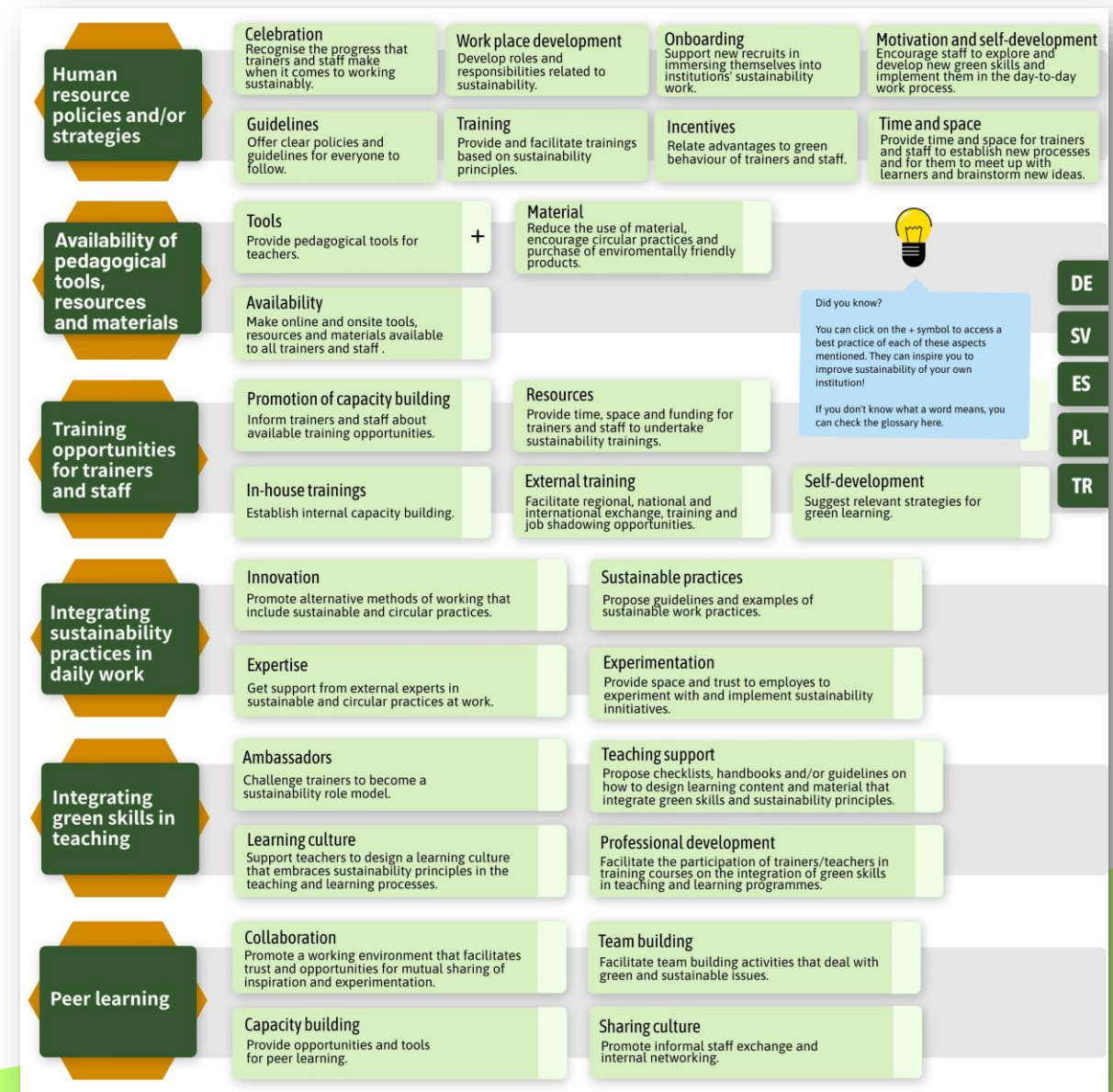


Co-funded by the European Union



Green Skills of Trainers and Staff

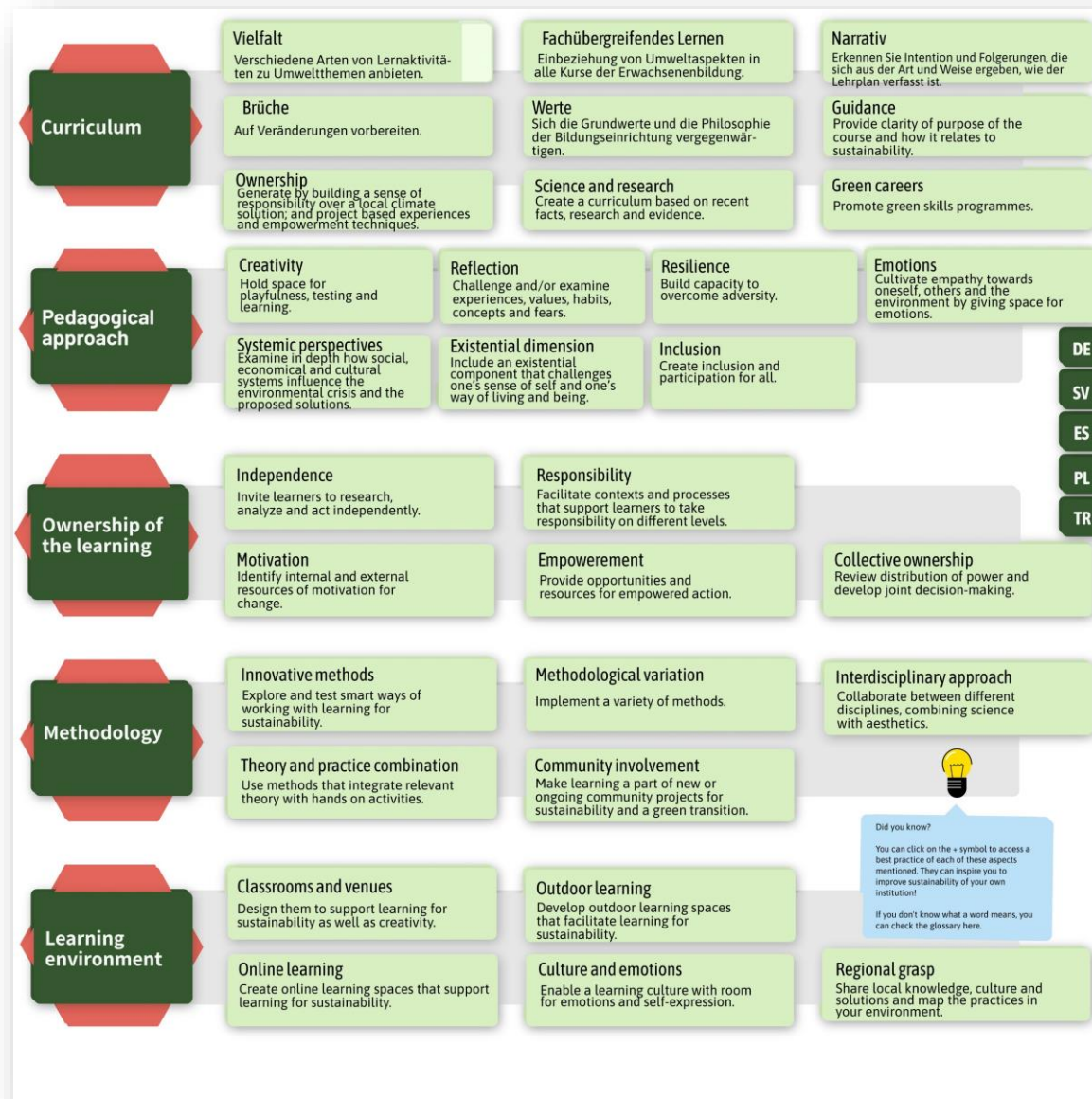
- What are Green Skills of Trainers and Staff, and why do they matter for the sustainability of ALE institutions?
- Adult education providers can promote green skills and support staff and trainers to take action through sustainability policies, strategies, programmes and practices.





Engagement of Learners

- What is the Engagement of Learners, and why does it matter for the sustainability of ALE institutions?
- Adult education organisations can provide a space for innovative and co-creative green curricula and support sustainability in a learning community. By engaging learners sufficiently, learners can understand this process of learning. They are able to take ownership of it and act in relation to environmental challenges.



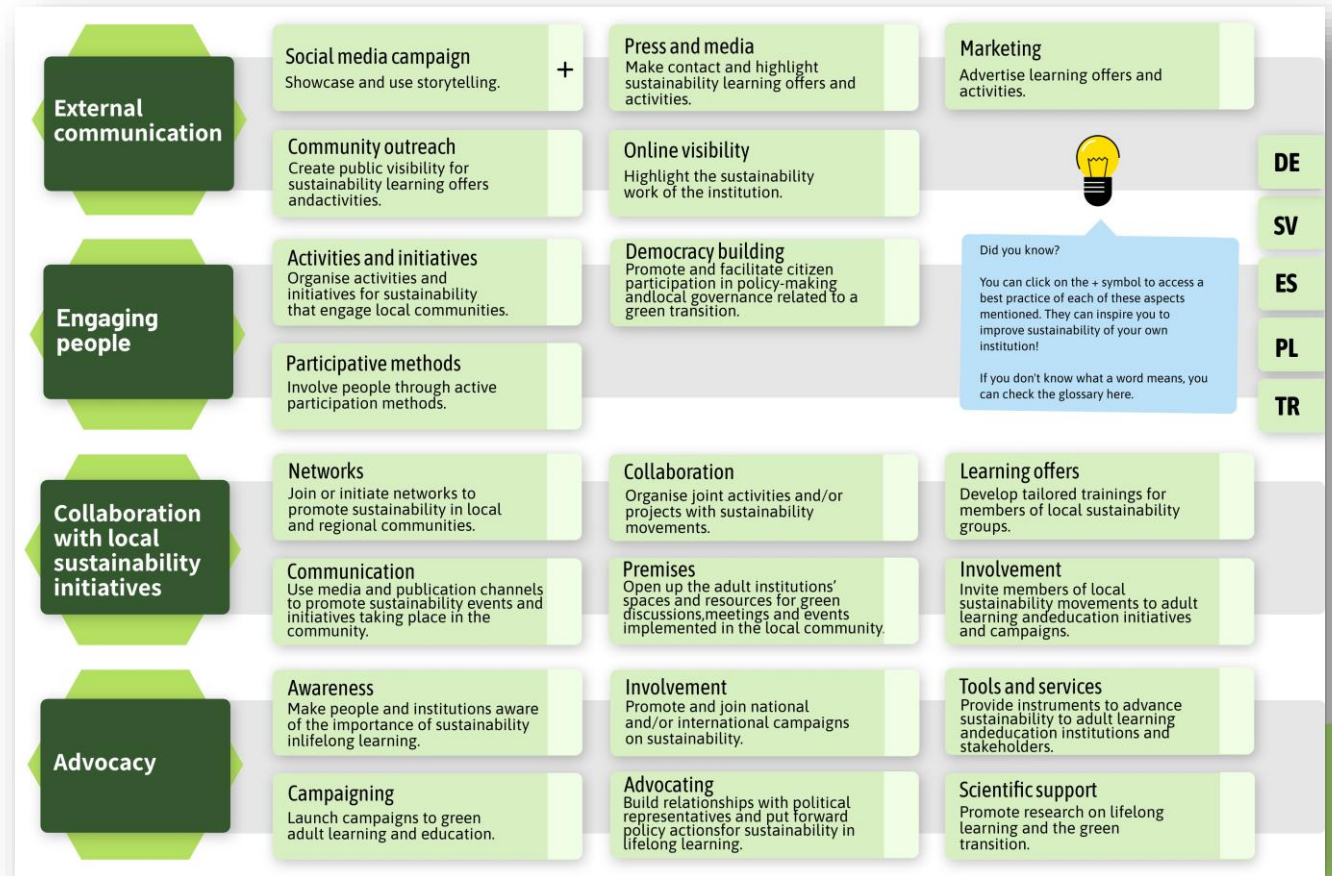


Co-funded by the European Union



Awareness Raising and Involvement of People

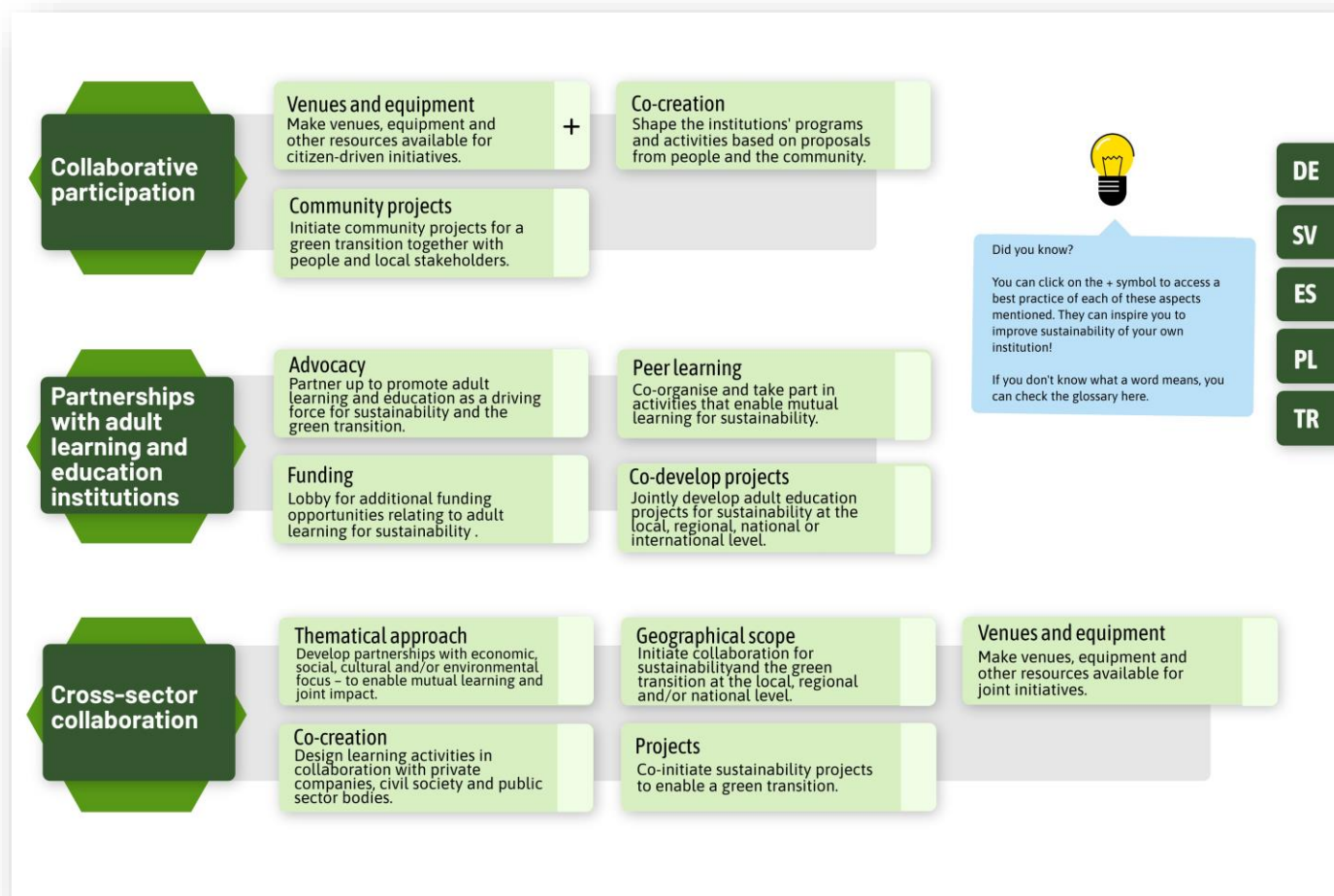
- What is Awareness Raising and Involvement of People, and why does it matter for the sustainability of ALE institutions?
- Adult education providers can enable sustainable lifestyles and involve people in a green transition, through various activities, such as advocacy, campaigning, festivals and community projects. By involving more people in activities and advocacy campaigns, institutions can ensure that sustainability is seen as an integral part of lifelong learning.





Partnerships for Sustainability

- What are Partnerships for Sustainability, and why do they matter for the sustainability of ALE institutions?
- Adult education providers initiate or join partnerships to have a relevant societal impact for a green transition – reaching new target groups and opening up for new possibilities and collaborations.





Co-funded by
the European Union



Join our LinkedIn Community

JOIN OUR COMMUNITY!

ARE YOU GREEN-MINDED AND WORK WITH ADULT EDUCATION? ARE YOU INTERESTED IN SUSTAINABILITY AND LEARNING INSTITUTIONS?

SMALEI
Sustainability Matrix for Adult Education Institutions

Co-funded by the Erasmus+ Programme of the European Union

Green Adult Learning and Education Community

Public group

The screenshot shows a LinkedIn community page. At the top is a green banner with the text 'JOIN OUR COMMUNITY!' and a question: 'ARE YOU GREEN-MINDED AND WORK WITH ADULT EDUCATION? ARE YOU INTERESTED IN SUSTAINABILITY AND LEARNING INSTITUTIONS?'. The banner includes the SMALEI logo and an illustration of two people. Below the banner is the group name 'Green Adult Learning and Education Community' and the text 'Public group'. On the right side of the banner, there is a smaller SMALEI logo and the text 'Co-funded by the Erasmus+ Programme of the European Union'. At the bottom of the banner, there are icons for information, share, notifications, edit, and a menu.

#SMALEI