



SELFIE and its extension for Work-Based Learning

*Tim Schreiber
European Commission
Directorate-General for Employment, Social Affairs and Inclusion
B3 Vocational Education and Training, Cedefop*

3 February 2022

Why is there need for SELFIE and SELFIE for Work-Based Learning (WBL)?

- In 2019: **42% of EU adult population without basic digital skills.**
- By 2025 (2030): **70% (80%) of European adults aged 16-74 years should have a minimum of basic digital skills.**
- **Impact of Covid-19:** Massive shift to online technologies and remote connections for learning and working, but more difficult for VET / WBL.
- **EU Council Recommendation on VET:** Supporting the **qualitative and effective digitalisation of VET provision** in school-based and work-based learning by promoting European competence frameworks and European self-assessment tools.

What is SELFIE?



- A self-reflection tool for schools to assess the school's use of digital technology.
- It is a tool which brings together perspectives of school leaders, teachers and students.
- It is an online tool which can run on any device, such as smart phones, tablets or PC.

Uptake of SELFIE

Total participation

2.288.516



12.561



79

Any school can use SELFIE



SELFIE is designed for any school: primary, secondary or vocational. It doesn't matter how big or small it is. It doesn't matter either how advanced or not it is in the use of technologies for teaching and learning.

Who is SELFIE for?

- **Open to all** schools.
- **Free** of charge.
- Available in **40 languages**.
- **Customisable** to suit schools' different needs.
- Data is **anonymous**.

Questions are divided into eight different areas



A. Leadership



B. Collaboration and Networking



C. Infrastructure



D. Continuing Professional Development



E. Pedagogy:
Support and Resources



F. Pedagogy:
Implementation
in the classroom



F. Assessment Practices



G. Student Digital
Competence

Flexible, as every school is different

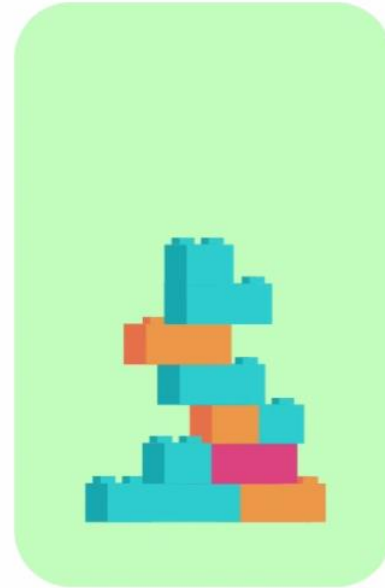
YOUR OWN
QUESTIONS



OPTIONAL
QUESTIONS



COMMON
QUESTIONS



What is SELFIE WBL?

- Part of the SELFIE 'family' and integrated into the SELFIE tool.
- Gathers **4 perspectives**:
 - VET school leaders.
 - VET school teachers.
 - VET learners.
 - **In-company trainers.**

Some examples of statements to be ranked by in-company trainers

- In our company, there are digital devices for me to use for training (*infrastructure and equipment*).
- As a company, we are involved in the development of the school's digital strategy (*network & collaboration*).
- I use digital technologies to foster students' creativity (*implementation in the classroom*).

SELFIE WBL pilots

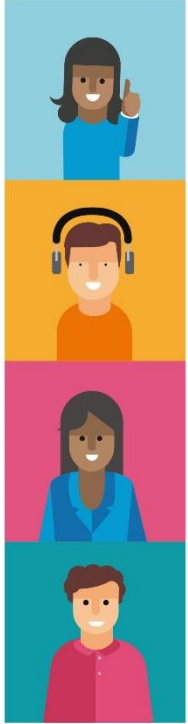
SELFIE WBL pilots

9 Countries
30k Participants
127 VET Schools
280 Companies

	DE	FR	HU	PL	RO	GE	ME	RS	TR
PILOT PHASE START & END DATE	14/09 08/10	28/09 11/12	5/10 05/11	29/09 30/10	16/11 04/12	02/11 23/11	20/10 15/11	05/10 11/11	17/11 27/11
NATIONAL KICK-OFF DATE	14/09	14/09	22/09	15/09	13/11	27/10	15/10	05/10	17/11
NUMBER OF PARTICIPATING SCHOOLS	12	11	14	12	27	11	7	10	23
NUMBER OF PARTICIPATING COMPANIES	26	11	26	13	50	15	20	30	87

Total Responses	School leaders	Teachers	Students	In-company Trainers
29204	507	3335	24982	380

Remark: pilot outcomes are not representative of national education and training systems



#SELFIE_Forum2021
7 - 8 October

Nicolas SCHMIT

*European Commissioner for Jobs
and Social Rights*



Empowering schools for learning in the digital age



Setting up SELFIE and SELFIE WBL

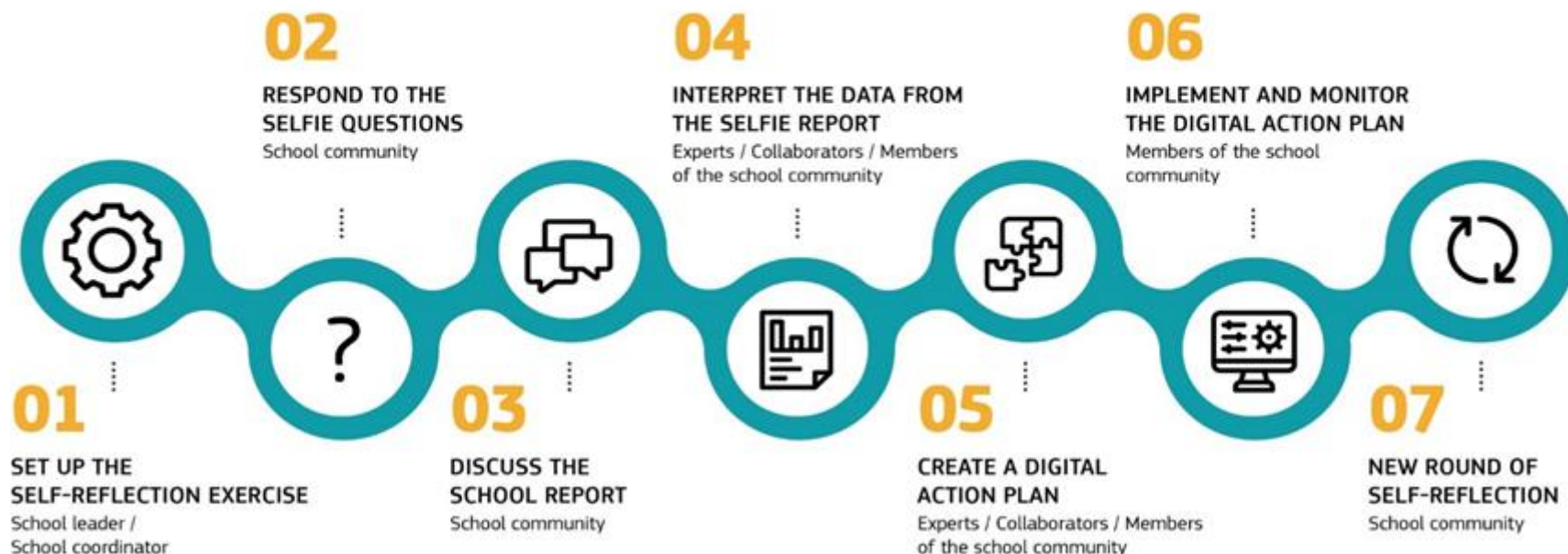
- A **school coordinator** needs to set up the SELFIE tool for the school.
- The school coordinator will set up the school questionnaire and decide the timing and who will participate from the school and the training company.
- An automatic link is generated.
- The school coordinator needs to send the link to the school leaders, teachers, students and in-company trainers.



Access to SELFIE WBL

- If you are a VET school and you would like to use the new SELFIE WBL module you should:
 - Log in to SELFIE ([first time users can see how to register](#)).
 - Set up a new self-reflection exercise.
 - Choose “Upper secondary vocational level” when selecting your education level.
 - Click the checkbox “Will companies take part in this survey?”

STAGES OF COLLECTIVE REFLECTION WITH SELFIE FOR THE DEVELOPMENT OF THE SCHOOL DIGITAL CAPACITY



Key messages about SELFIE WBL

- **Knowing where you stand:** Using SELFIE WBL is the starting point of a process. Whether actual change follows and identified weaknesses are tackled depends on VET providers, training companies and context factors.
- **Stimulating dialogue:** SELFIE WBL as an opportunity to stimulate a discussion between VET providers and training companies about how to best work together to equip learners with digital skills.
- **Long-term benefit vs. short-term extra work load:** Important to make clear to both VET providers and training companies why it matters to invest a few hours in participating in SELFIE WBL. This includes announcing a concrete follow-up.
- **Promotion is key:** Ensure that not only the digital champions participate but also VET providers and training companies that do not attach as much attention to digitalisation yet use the tool.

More information



#SELFIE_EU | #workbasedlearning #EUDigitalEducation

Webinar on SELFIE WBL: 22 February, 16.00-17.30 CET

<https://education.ec.europa.eu/self-reflection-tools>

<https://education.ec.europa.eu/news/work-based-learning-module>

Thank you very much
for your attention!