

”COOMPANION” - a Swedish nationally spread network with co-operative development agencies.



Cooperation is owned and financed by public and co-operative organizations in partnership

- * advice

- * learning

- * ESF projects

- * self-employment



Status

- During 2012 there was a decrease in formed businesses compared with 2011 by 11%.
- Co-operatives increased by 21%!!
- When asked – 72% of young people that wants to start a business – wants to do it “together”.

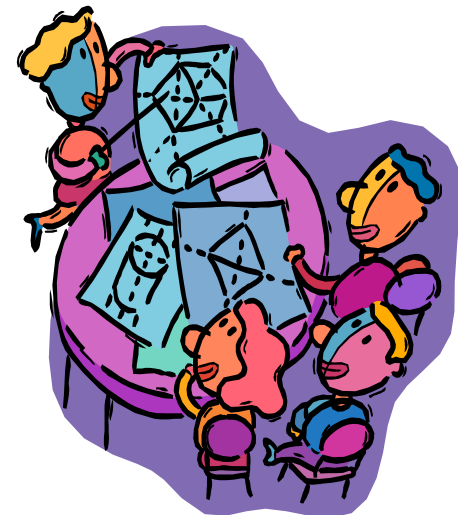
Social entrepreneurship

- Integrates people that has difficulties on the labour market, into working life, business and society
- Creates involvement for the employees through ownership agreements etc.
- Reinvestments of profit in the business
- Not defined as public sector



Social companies 2012

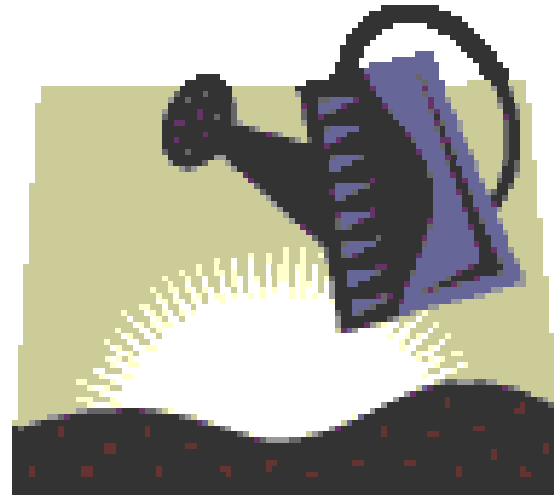
- * 271 enterprises in all over Sweden
- * 8 900 people are involved in the companies and of that 2 600 are employees
- * In Jämtland county there are 5 social companies and about 40-45 employees
- * ex. Govido and the A-team



Why social companies?



- IT IS AN INVESTMENT FOR THE INDIVIDUAL AND FOR SOCIETY!!





SELF EMPLOYMENT

Being an entrepreneur – but
without starting a business!

When self employed you can...

- Test your business idea
- Establish customer contacts
- Establish yourself on the labour market
- Start your own business in an easier way
- Put time and effort on your clients – NOT on the administrative tasks.



Self employed Victor Svedberg från Östersund, works with webb development.

Self-employment in Sweden

- 10 000 self-employed *
- 4 000 persons have self-employment as their main income *
- 1 000 persons have gone from unemployment to self-employment



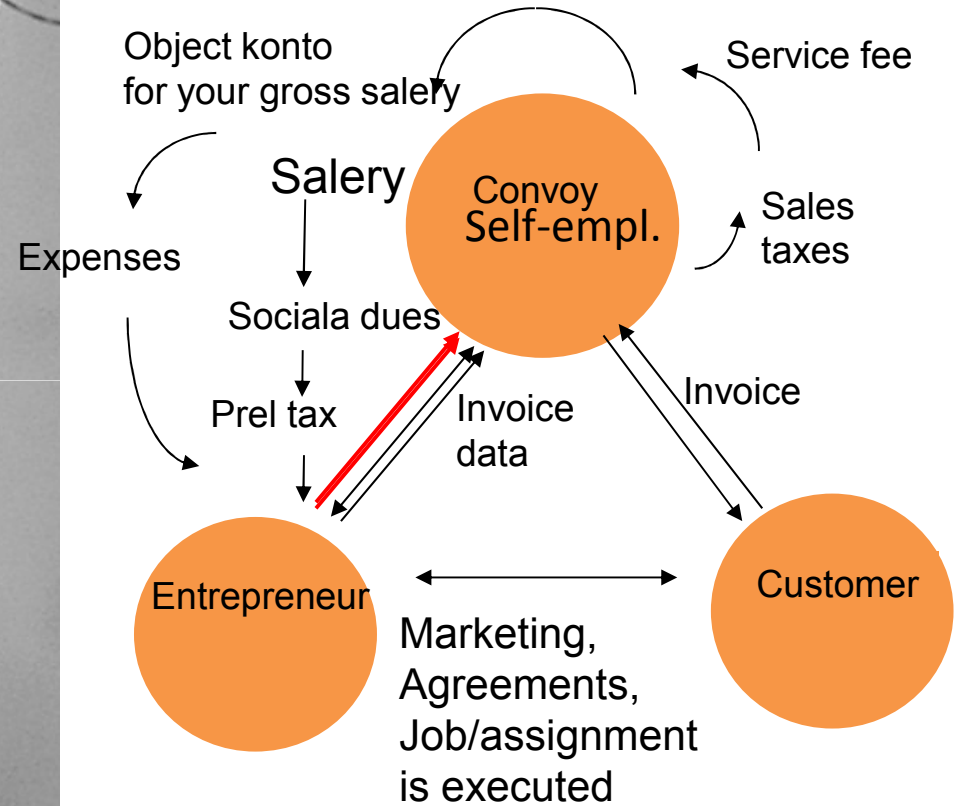
Self employed Jonas Dahl, Östersund, makes commercial event radio

* Tillväxtverket 2012



Per Riekkola, Convoy
Bild: Per Riekkola, Convoy

What does Convoy do?



Project Self-employment

easier entrepreneurship in middle Norrland

- Purpose:
- To spread knowledge of self-employment to makes more jobs in middle Norrland
- To mobilize for more people to develop their skills and to help them test their ideas for business through self-employment
- Financed by European Unionen Regional Development fond 2012-2014.

COMPANION
KOOPERATIV UTVECKLING
JÄMTLANDS LÄN

Hela Sverige
ska leva!



En investering för framtiden



social
ekonomi
Mellan två Norrland



For more information

www.facebook.com/egenanställning

Coompanion Jämtlands Län

Pelle Persson, pelle@coompanion.se, 070-210 15 80

Anna Frestadius, anna.frestadius@coompanion.se, 070-280 62 44

- THANK YOU FOR LISTENING!!

